

# Campbell-Taylor Solicitors

*Specialists in capacity, health and social care law*

Legal advice and assistance for those who have health or social care needs or those who care for someone who has including care home disputes, LPAs, wills and Court of Protection cases.

## Who are we?

Founded in 1996 we are a niche firm of solicitors that specializes in health and social care law. We undertake a mix of legal aid and private client work. We have contracts with the Legal Services Commission in mental health and community care including an exclusive LSC contract to provide community care advice in the Royal Borough of Kensington and Chelsea. Where legal aid funding is not available we undertake work on a privately funded basis at reasonable rates.

### *Our community care legal team:*

**Rod Campbell-Taylor** is the managing solicitor. He has been providing specialist legal advice in community care, mental health/capacity and court of protection law for nearly 15 years. He has been a member of the Law Society's specialist Mental Health Accreditation Scheme since 1996 and is a committee member of the Mental Health Lawyers Association and a member of Solicitors for the Elderly.

**Belinda Adu** is a solicitor specializing in community care law and has particular interest in the care needs of people subject to immigration control.

**Zoë Whittington** is a experienced advisor in community care and has been the lead advisor at the weekly legal clinic held at the Kensington and Chelsea Mental Health Carers Association at Canalside House, Ladbroke Grove. Zoë has experience of elderly client work including drafting LPAs. Zoë has been accepted onto the Law

Society's Mental Health Accreditation Scheme.

**Tom Lewenstein** is due to qualify as a solicitor in November 2010. He specialises in both community care and mental health law. He can also assist clients who wish to obtain compensation from NHS Trusts or Local Authorities whether via a complaint to the relevant Ombudsman or court proceedings. He also deals with Court of Protection matters and is a member of the Law Society's Mental Health Accreditation Scheme.



## The services we offer

Our specialist team has extensive experience of providing advice and representation in the following areas:



**Community care.** We offer help across the whole gamut of community care law including problems relating to those suffering from or caring for someone with a physical or learning disability, the problems of the elderly and those of children, people with mental health problems and asylum seekers.

**Elderly client.** We undertake the particular problems faced by those already in or approaching their later years including obtaining appropriate support, disputes concerning care funding, issues relating to lasting powers of attorney, the appointment of a deputy, wills and probate.

**Mental capacity and Court of Protection.** We bring our long experience of mental

health law to this important and developing area of law.

**Mental health and deprivation of liberty.** We have long experience of representing those detained in hospitals under the mental health act or in care or nursing homes under the recently introduced deprivation of liberty provisions.

We understand some of the problems you may be facing and we will spend time listening and discussing your options. We recognize that your problems may be distressing to talk about and you can be assured of our sensitive and understanding approach.

We are the only organisation in Kensington and Chelsea to hold a legal aid contract in community care.

## What is community care law?

Community care law is about the assistance you may be entitled to if you have special needs or if you care for someone who has.

It concerns the services that social services and the health authorities can provide in order to help people with care needs to live as independently as possible. The law governs how public authorities must assess care needs, as well as how they provide for those needs and the rules for deciding whether the provision is adequate.

Community care law affects anyone who has care needs, including older adults, young people and children with a physical or mental impairment. It also covers the rights of carers.

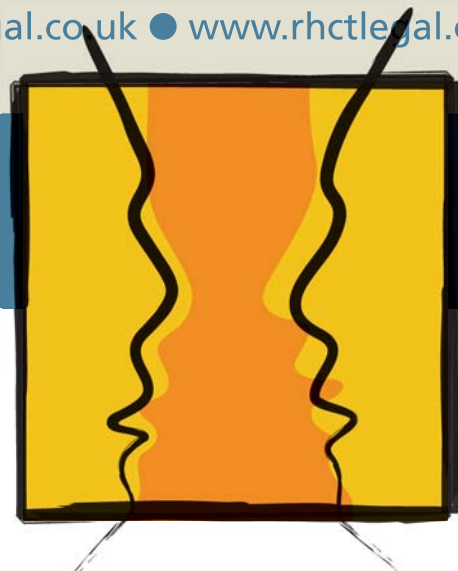
### How we can help

We give advice on all aspects of community care law. We can advise if you want to prepare for a time when you may lack capacity and want to consider making a Lasting Power of Attorney or an advanced decision about your future welfare and/or treatment.. We can also advise on the practical implications that may arise if you, or a relative, have to go into a nursing or

residential care home, such as what will happen to your home and what financial contributions you may have to make for your care. Although we do not provide specific financial advice or services we can put you in touch with highly reputable companies specialising in this area.

Some specific examples of how we may be able to assist you include:

- Obtaining or challenging Community Care Assessments
- Challenging service provision, quality of services, withdrawal of services, and cost-capping
- Challenging charges levied for community care services
- Challenging hospital discharge decisions or the care package that it is to be put in place to facilitate a discharge
- Obtaining or challenging a personal budget or some other form of direct payment
- Advising carers on their rights (including assessments and respite)



- Advising on children's services
- Obtaining aids, adaptations & facilities grants
- Advising on the practical implications of you or your relative going into care
- Representing incapacitated adults and advising on issues arising under the Mental Capacity Act 2005, including 'best interests' decision-making
- Advising on Lasting Powers of Attorney or Advance Directives.

## Financing your case

Where you do not qualify for legal aid we offer free initial telephone consultations and fixed fee one-hour diagnostic interviews.

We offer very reasonable hourly rates and, where relevant, conditional fee agreements.

## Contact us

### LADBROKE GROVE

We see clients by appointment at:  
Canalot Studios, 222 Kensal Road  
W10 5BN

5 mins walk from Ladbrooke Grove  
Sainsbury's.

T: 0845 567 2457  
F: 0845 567 2458  
E: [admin@rhctlegal.co.uk](mailto:admin@rhctlegal.co.uk)

Where, due to disability or carer responsibilities, you are unable to come to us we will be happy to arrange a home visit

### DALSTON

We are also at:  
3 Bradbury Street, N16 8JN

2 mins walk from Dalston Kingsland  
overground station

T: 020 7923 9583  
F: 020 7923 0055



**Mental Health  
Review Tribunal**



Mental Health Lawyers Association